

Technical information

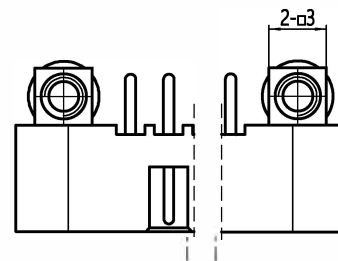
1. Basic features

This series of connectors is a double-row bent pin welded socket, which is connected with the corresponding number of pins by in-line thread locking, and has the functions of positioning recognition and anti-misinsertion.

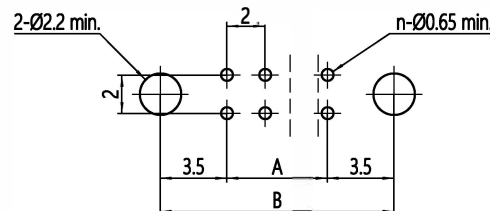
The connector adopts 0.5 mm contact parts for the plug ends, the transverse distance is 2mm, and the longitudinal row distance is 2mm.

The contacts are all gold-plated, with excellent contact performance and high reliability.

This series of connectors has different sizes according to the number of cores. For details, please refer to the table on the right.



Recommended opening dimensions for printed boards



2. Main technical parameters

Rated voltage: 800V/DC

Rated current: 3A max./25 °C

Contact resistance: ≤ 10 mΩ

Insulation resistance: ≥ 5000mΩ/1000V/normal temperature and pressure

Mechanical life: 500 times

3. Environmental performance

Working temperature: -60 °C ~ + 250 °C;

Relative humidity: 95%/40 °C

Vibration: 10Hz ~ 2000Hz, 147 m/s², instantaneous break ≤ 1 us

Impact: 980 m/s², instantaneous break ≤ 1 us

Salt spray: 96h

222Y60M16C	60	58	65	70	1	30	31	60
222Y58M16C	58	56	63	68	1	29	30	58
222Y56M16C	56	54	61	66	1	28	29	56
222Y54M16C	54	52	59	64	1	27	28	54
222Y52M16C	52	50	57	62	1	26	27	52
222Y50M16C	50	48	55	60	1	25	26	50
222Y48M16C	48	46	53	58	1	24	25	48
222Y46M16C	46	44	51	56	1	23	24	46
222Y44M16C	44	42	49	54	1	22	23	44
222Y42M16C	42	40	47	52	1	21	22	42
222Y40M16C	40	38	45	50	1	20	21	40
222Y38M16C	38	36	43	48	1	19	20	38
222Y36M16C	36	34	41	46	1	18	19	36
222Y34M16C	34	32	39	44	1	17	18	34
222Y32M16C	32	30	37	42	1	16	17	32
222Y30M16C	30	28	35	40	1	15	16	30
222Y28M16C	28	26	33	38	1	14	15	28
222Y26M16C	26	24	31	36	1	13	14	26
222Y24M16C	24	22	29	34	1	12	13	24
222Y22M16C	22	20	27	32	1	11	12	22
222Y20M16C	20	18	25	30	1	10	11	20
222Y18M16C	18	16	23	28	1	9	10	18
222Y16M16C	16	14	21	26	1	8	9	16
222Y14M16C	14	12	19	24	1	7	8	14
222Y12M16C	12	10	17	22	1	6	7	12
222Y10M16C	10	8	15	20	1	5	6	10
222Y08M16C	08	6	13	18	1	4	5	8
222Y06M16C	06	4	11	16	1	3	4	6
222Y04M16C	04	2	9	14	1	2	3	4
Model	Number of contacts	A	B	C	Number correspondence			
		d	e	f	g			

TEL222YnnM16C Connector model reference table

MARK	QTY	Change Document NO.	Signature	DATE	FINISH	Ningbo HST-Tech Co., Ltd.			
DESIGN					MATERIAL				
CHECKED					Description	TEL222YnnM16C			
ENGINEER					THIS DRAWING IS SUPPLIED FOR INFORMATION ONLY. DESIGN FEATURES, SPECIFICATIONS AND PERFORMANCE DATA SHOWN HEREON ARE THE PROPERTY OF THE CUIWEI. NO RIGHTS OF REPRODUCTION ARE IMPLIED.				
COUNTER-SIGN					FIRST ANGLE PROJECTION	MASS	SIZE	SCALE	Phase marker
STANDARDIZATION						Kg	A3		230101
APPROVAL					SURFACE AREA	mm ²	PAGE	PAGES	
CUSTOMER									