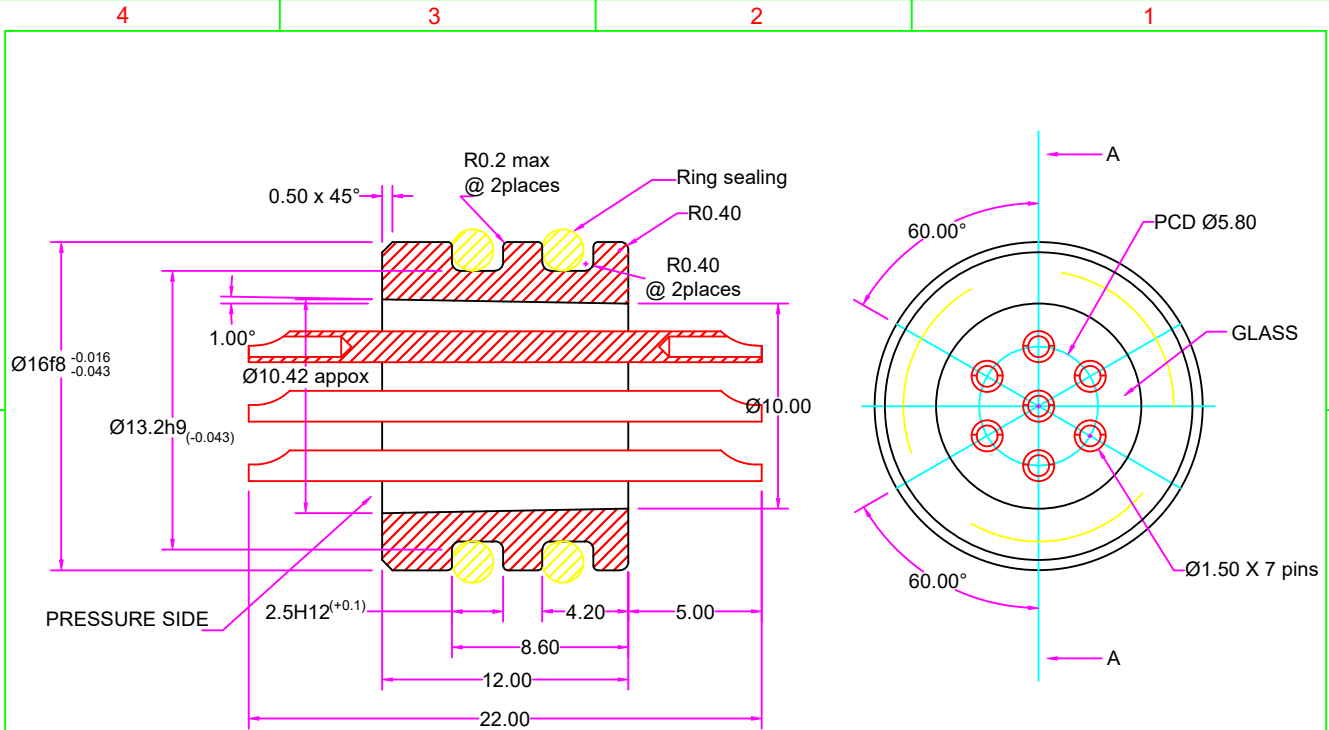
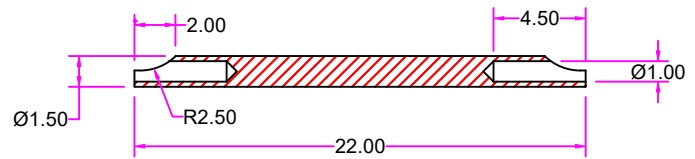


IF IN DOUBT ASK CLARIFICATION,
DO NOT SCALE.



A - A section view



TECHNICAL DETAILS:

1. SHELL MATERIAL & FINISH : SS 316L & NICKEL PLATING.
2. CONTACT PIN MATERIAL & FINISH : INCONEL X750 & NICKEL PLATING.
3. SEALING : GLASS TO METAL HERMETIC.
4. SURFACE ELECTROPOLISH.
5. TEMPERATURE RANGE: -55 ~ 200° C
6. PRESSURE RATING: 100 MPa
7. LEAK RATE: 1×10^{-9} cc/sec @ 1atm pressure Differential (Helium)
8. INSULATION RESISTANCE: 1000M OHMS @500V DC AT AMBIENT.
9. "O" RING DIMENSION OD-16.30mm, ID-12.50mm & Thickness 1.90mm (2 no's "O" ring per connector).

BODY & PIN DRG NO :TC 1579 P

NOTE: ALL DIMENSION ARE IN mm.

COMPONENTS SHALL BE FREE OF BURRS ON ALL EDGES & CORNERS.

AS PER IS:2102-1993			HOLES		TITLE.	7 PIN CONNECTOR GTMS ASSEMBLY			
LINEAR	ANGULAR	IS : GRADE	CLEAR H12 THREADED CLASS 6H UNPLATED/ UNCOATED.		MATERIAL.	BODY (SS 316L) & CONTACT PIN (INCONEL X750)			
X	□ C	EXTRA COURSE			FINISH.	REF TECHNICAL DETAIL			
X.0	□ C 0	COURSE			REF.	EPG-7/16/PSB			
X.00	□ C 00	MEDIUM			PART NO.	5C5N5N7P-TA1581P			
X.000		FINE							
FINISH IN MICRONS		DRAWING NO.		NAME	DATE	SCALE NTS	COSCODE		
	> 25			DRN	S.B			TA1581P	
	8 -25			CHD	K.G.P				
	1.6 -8			APPD					
	0.025 -1.6								
		REV NO		01					

REV NO	1	0	DATE	04-12-2024	04-06-2024	APPROVED
CHANGES MADE	Revised Pressure rating & O ring size added.					
ORIGINAL						