

## ZH28 series

ZH28为玻璃烧结密封插座,它与ZH23相应插头可配套使用。用于直流、交流、脉冲电流的电路中。

Zh28 is a glass sintered sealed receptacle that can be used in conjunction with the corresponding plug of ZH23. Used in circuits with direct current, alternating current, and pulse current.



### 技术性能

- 环境温度:  $-60^{\circ}\text{C} \sim +155^{\circ}\text{C}$ (最高 $200^{\circ}\text{C}$ )
- 振动:  $1-5000\text{Hz}$ 加速度 $\leq 40\text{g}$
- 绝缘电阻:  $\geq 5000\text{M}\Omega$
- 工作电压:  $700\text{V}$
- 冲击: 加速度多次  $150\text{g}$ , -次 $500\text{g}$
- 耐盐雾:  $48\text{h}$
- 相对湿度:  $30^{\circ}\text{C} \sim 60^{\circ}\text{C}$   $92\% \sim 98\%$
- 机械寿命:  $500$ 次

### Technical characteristics

- Environmental temperature:  $-60^{\circ}\text{C} \sim +155^{\circ}\text{C}$ (maximum  $200^{\circ}\text{C}$ )
- Vibration:  $1-5000\text{Hz}$  accelerations  $\leq 40\text{g}$
- Insulation resistance:  $\geq 5000\text{M}\Omega$
- Operational voltage:  $700\text{V}$
- Impact: acceleration  $500\text{g}$ (multiple times);  $150\text{g}$ (once)
- Salt spray resistance:  $48\text{h}$
- Relative humidity:  $30^{\circ}\text{C} \sim 60^{\circ}\text{C}$   $92\% \sim 98\%$
- Mechanical life:  $500$  times

接触件直径 Contact diameter	接触电阻 Contact resistance	工作电流 Working current ( A )
1.0mm	$\leq 15\text{m}\Omega$	5
1.5mm	$\leq 10\text{m}\Omega$	10
2.0mm	$\leq 8\text{m}\Omega$	15

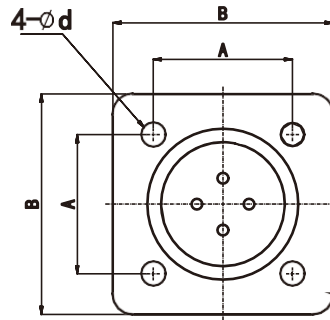
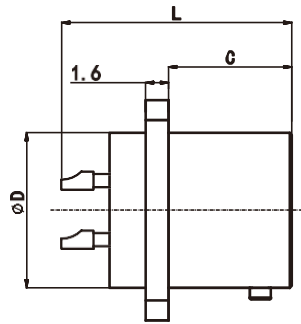
等级 Grade	工作电压 Operational voltage ( V )	试验电压 Test voltage ( V )
A	700	2100
B	500	1850
C	400	1600

### 命名

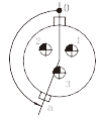
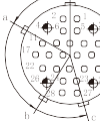
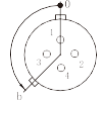

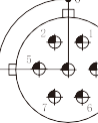

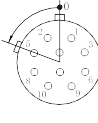
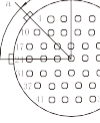

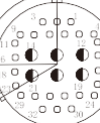
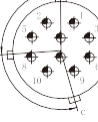
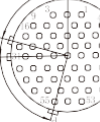

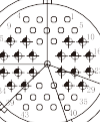

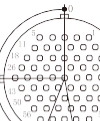
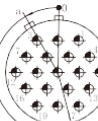
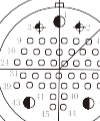
	ZH28-	4	/14	B-	1-	b-	B
密封插座型号							
接触件数量							
壳体号	14, 18, 22, 24, 27, 30, 33, 36, 39						
B: 装针							
不带尾附							
键位	无标记-标准键位						
	a, b, c, d						
全天候							

### How to order

	ZH28-	4	/14	B-	1-	b-	B
Hermetic type							
No. of contacts							
Shell No.	14, 18, 22, 24, 27, 30, 33, 36, 39						
B: Pin (Male)							
Without tail attachment							
Key position	Omit- Standard key						
	a, b, c, d						
All-climate							



接触件数 Number of contacts	壳体号 Shell No	尺寸 Dimensions ( mm )						
		A	B	C	D	d	L	
3/14		16.5	21.7	11.3	14	2.2		
4/14								
7/18		19.5	25.9		18			
10/18								
7/22		23	29.4		22			3.2
10/22								
19/22								
19/24		25	31.4		24			
19/27		27	33.4		27			
28/27								
32/27								
24/30		31	37.8	30				
41/30								
32/33		34	41.5	33	25.2			
55/33								
43/36		36.5	44.5	36	26.7			
61/36								
45/39		40	46.4	39	25.2			
				13		26.7		

接触件数 Number of contacts	变键位角度 Polarization key				接触件型谱图 Pins layout	接触件数 Number of contacts	变键位角度 Polarization key				接触件型谱图 Pins layout
	壳体号 Shell No.	a	b	c			d	壳体号 Shell No.	a	b	
3/14	160°	/	/	/	 3-Ø1.5	28/27	45°	150°	195°	/	 24-Ø1.0 4-Ø1.5
4/14	/	135°	/	/	 4-Ø1.0	32/27	45°	135°	/	270°	 32-Ø1.0
7/18	90°	/	/	/	 7-Ø1.5	24/30	90°	135°	200°	/	 24-Ø1.5
10/18	/	70°	/	/	 10-Ø1.0	41/30	45°	90°	/	/	 41-Ø1.0
7/22	80°	170°	225°	/	 3-Ø2 4-Ø1.5	32/33	90°	120°	/	/	 26-Ø1.0 6-Ø2.0
10/22	/	100°	195°	/	 10-Ø1.5	55/33	75°	90°	/	165°	 55-Ø1.0
19/22	30°	/	225°	/	 19-Ø1.0	43/36	90°	135°	200°	250°	 23-Ø1.0 20-Ø1.5
19/24	30°	120°	245°	/	 15-Ø1.0 4-Ø1.5	61/36	90°	160°	190°	/	 61-Ø1.0
19/27	30°	195°	/	/	 19-Ø1.5	45/39	90°	180°	270°	315°	 3-Ø2 2-Ø1.5 40-Ø1.0

○ 1.0mm    ◐ 1.5mm    ◑ 2.0mm