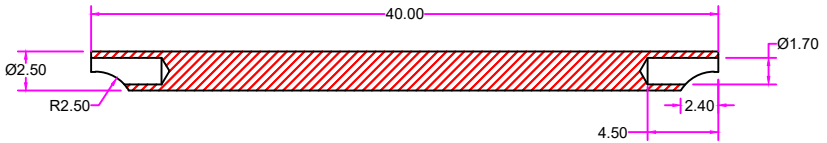
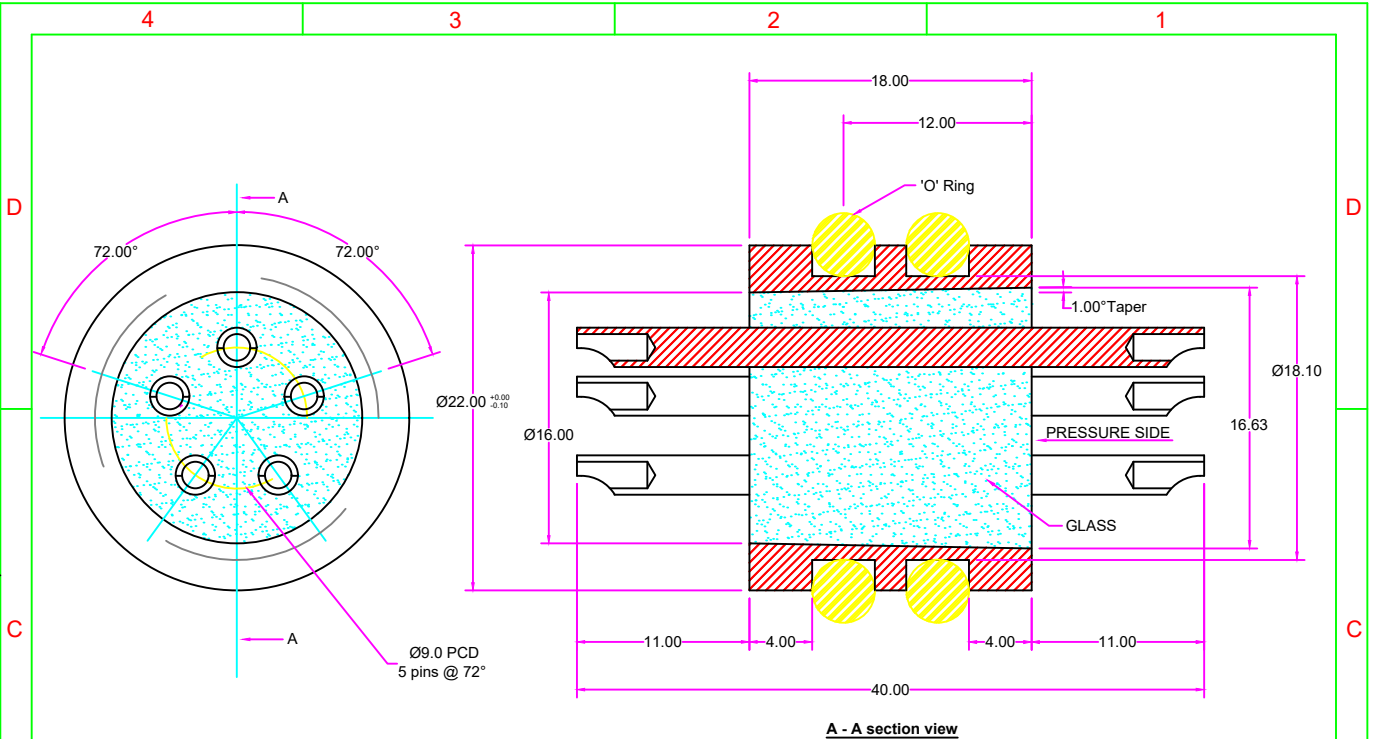


IF IN DOUBT ASK CLARIFICATION,  
DO NOT SCALE.



**TECHNICAL DETAILS:**

1. SHELL MATERIAL & FINISH : SS304L & ELECTROPOLISH / NICKLE PLATING.
2. CONTACT PIN MATERIAL & FINISH : ALLOY 52 & GOLD PLATING / NICKEL PLATING.
3. SEALING : GLASS TO METAL HERMETIC.
4. SURFACE ELECTROPOLISH.
5. TEMPERATURE RANGE: -55 ~ 180° C
6. PRESSURE RATING: 95 MPa.
7. LEAK RATE: 1\*10<sup>-9</sup> cc/sec @ 1atm pressure Differential (Helium).
8. MAX CURRENT ON PIN 15 AMPS.
9. INSULATION RESISTANCE: 1000M OHMS @500V DC AT AMBIENT.
10. "O" RING DIMENSION OD-Ø26 & ID-Ø18.

BODY & PIN DRG NO :TC 1579F

NOTE: ALL DIMENSION ARE IN mm.

COMPONENTS SHALL BE FREE OF BURRS ON ALL EDGES & CORNERS.

AS PER IS:2102-1993			HOLES		TITLE.	<b>5 PIN CONNECTOR GTMS ASSEMBLY</b>				
LINEAR	ANGULAR	IS : GRADE	CLEAR H12	THREADED CLASS 6H UNPLATED/ UNCOATED.	MATERIAL.	<b>BODY (SS 304) &amp; CONTACT PIN (ALLOY 52)</b>				
X	□ C	EXTRA COURSE			FINISH.	<b>REF TECHNICAL DETAIL</b>				
X.0	□ C 0	COURSE			REF	<b>LHs3.652.8511</b>				
X.00	□ C 00	MEDIUM								
X.000		FINE								
		FINISH IN MICRONS			NAME	DATE	SCALE NTS	COSCODE	DRAWING NO.	
	> 25		DRN		S.B				<b>TA1581F</b>	
	8 -25		CHD		K.G.P					
	1.6 -8		APPD						<b>REV NO</b>	<b>01</b>
	0.025 -1.6									

REV NO	CHANGES MADE	DATE	APPROVED
3			
2			
1	SURFACE FINISH NI PLATING FOR BOTH BODY & PINS.	23-11-2023	
0	ORIGINAL	08-09-2023	