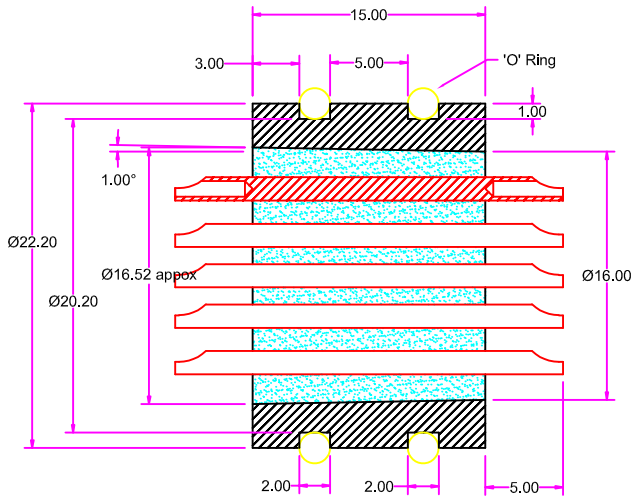
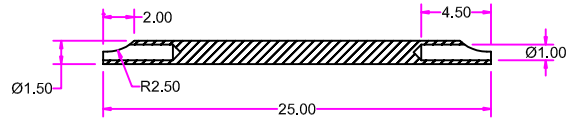
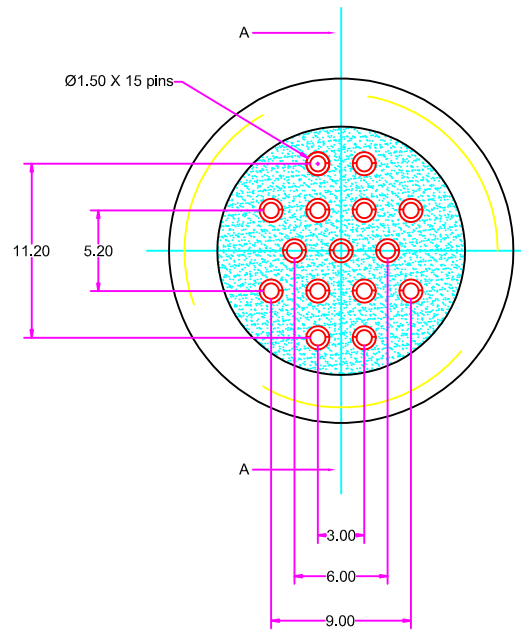


IF IN DOUBT ASK CLARIFICATION,
DO NOT SCALE.



A - A section view



TECHNICAL DETAILS:

1. SHELL MATERIAL: SS304L
2. CONTACT PIN MATERIAL & FINISH : ALLOY 52 & GOLD PLATING
3. SEALING : GLASS TO METAL HERMETIC
4. SURFACE ELECTROPOLISH
5. TEMPERATURE RANGE: -55 ~ 200° C
6. PRESSURE RATING: 95 MPa
7. LEAK RATE: 1×10^{-9} cc/sec @ 1atm pressure Differential (Helium)
8. INSULATION RESISTANCE: 1000M OHMS @500V DC AT AMBIENT.

BODY & PIN DRG NO :TC 1579A

NOTE: ALL DIMENSION ARE IN mm.

COMPONENTS SHALL BE FREE OF BURRS ON ALL EDGES & CORNERS.

AS PER IS:2102-1993			HOLES		TITLE.	15 PIN CONNECTOR GTMS ASSEMBLY					
LINEAR	ANGULAR	IS : GRADE	CLEAR H12	THREADED CLASS 6H UNPLATED/ UNCOATED.	MATERIAL.	BODY (SS 304) & CONTACT PIN (ALLOY 52)					
X	□ C	EXTRA COURSE			FINISH.	REF TECHNICAL DETAIL					
X.0	□ C 0	COURSE			REF	LHs3.652.8514					
X.00	□ C 00	MEDIUM									
X.000		FINE									
FINISH IN MICRONS					NAME	DATE	SCALE NTS	COSCODE	DRAWING NO.		
~	>	25			DRN	S.B			TA1581A		
▽	8	-25			CHD	K.G.P					
▽▽	1.6	-8			APPD						REV NO
▽▽▽	0.025	-1.6									

REV NO	CHANGES MADE	DATE	APPROVED
3			
2			
1			
0	ORIGINAL	07-06-2023	