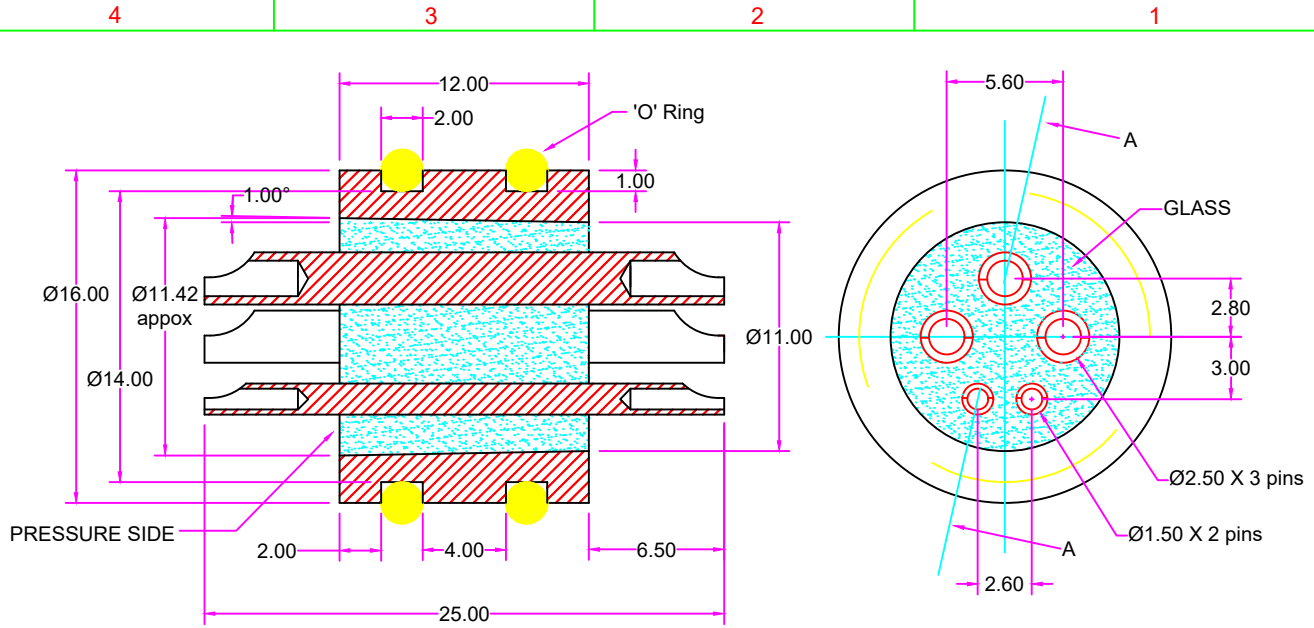
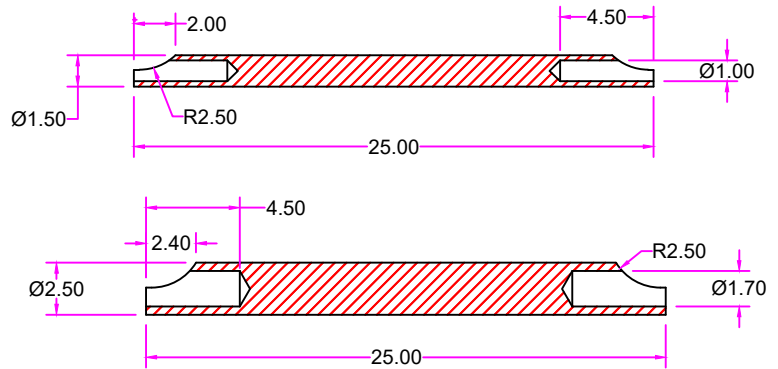


IF IN DOUBT ASK CLARIFICATION,
DO NOT SCALE.



A - A section view



TECHNICAL DETAILS:

1. SHELL MATERIAL & FINISH : SS304L & ELECTROPOLISH / NICKEL PLATING.
2. CONTACT PIN MATERIAL & FINISH : ALLOY 52 & GOLD PLATING / NICKEL PLATING.
3. SEALING : GLASS TO METAL HERMETIC.
4. SURFACE ELECTROPOLISH.
5. TEMPERATURE RANGE: -55 ~ 120° C.
6. PRESSURE RATING: 95 MPa.
7. LEAK RATE: 1*10⁻⁹ cc/sec @ 1atm pressure Differential (Helium).
8. INSULATION RESISTANCE: 1000M OHMS @500V DC AT AMBIENT.
9. (3 POWER + 2 SIGNAL CONTACT), FOR POWER CONTACTS WORKING CURRENT-15 AMPS.
10. "O" RING DIMENSION OD-Ø18 & ID-Ø14.

BODY & PIN DRG NO :TC 1579J

NOTE: ALL DIMENSION ARE IN mm.

COMPONENTS SHALL BE FREE OF BURRS ON ALL EDGES & CORNERS.

AS PER IS:2102-1993			HOLES		TITLE.	5 PIN FEED THROUGH GTMS ASSEMBLY						
LINEAR	ANGULAR	IS : GRADE	CLEAR H12	THREADED CLASS 6H UNPLATED/ UNCOATED.	MATERIAL.	BODY (SS 304) & CONTACT PIN (ALLOY 52)						
X	□ C	EXTRA COURSE			FINISH.	REF TECHNICAL DETAIL						
X.0	□ C 0	COURSE			REF	-----						
X.00	□ C 00	MEDIUM										
X.000		FINE										
FINISH IN MICRONS					NAME	DATE	SCALE	NTS	COSCODE	DRAWING NO.		
∩	>	25			DRN	S.B					TA1581J	
▽	8	-25			CHD	K.G.P						
▽▽	1.6	-8			APPD							
▽▽▽	0.025	-1.6									REV NO	0

3	2	1	0	ORIGINAL	DATE	APPROVED
					23-11-2023	
REV NO	CHANGES MADE					