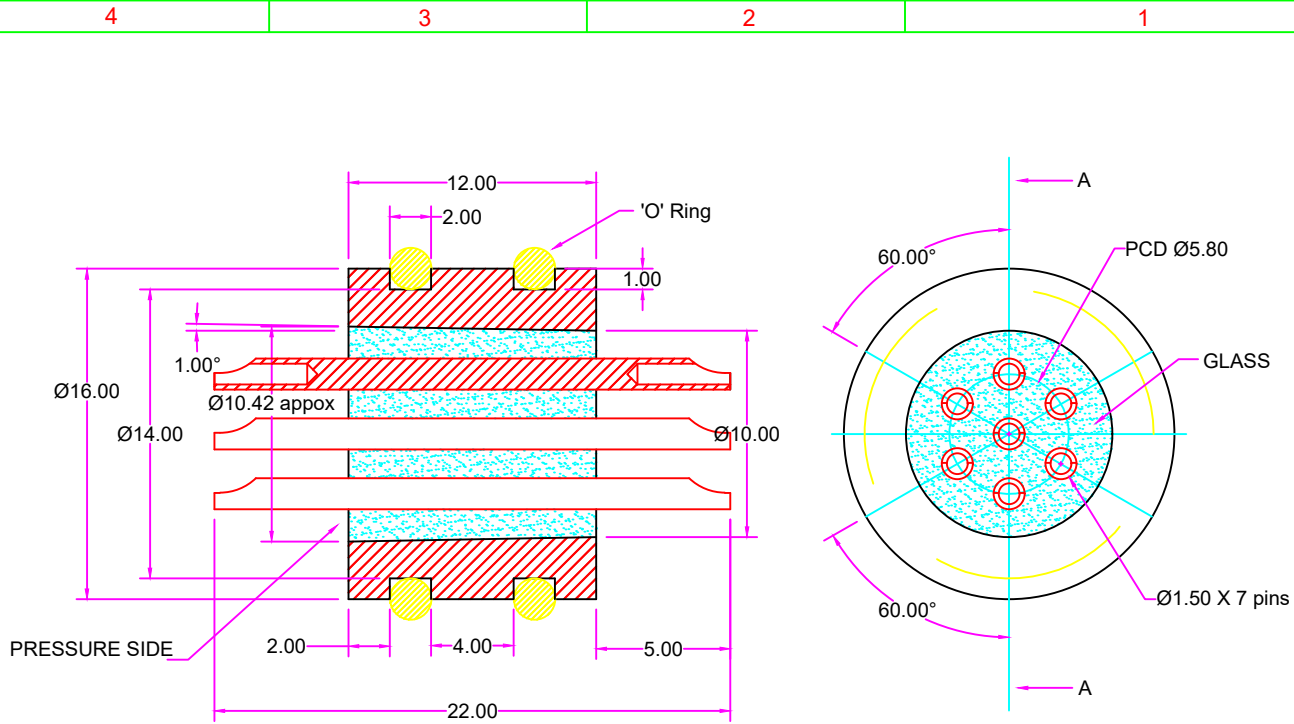
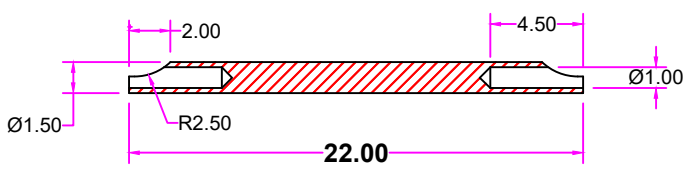


IF IN DOUBT ASK CLARIFICATION,
DO NOT SCALE.



A - A section view



- TECHNICAL DETAILS:**
1. SHELL MATERIAL & FINISH : SS304L & ELECTROPOLISH / NICKLE PLATING.
 2. CONTACT PIN MATERIAL & FINISH : ALLOY 52 & GOLD PLATING / NICKEL PLATING.
 3. SEALING : GLASS TO METAL HERMETIC.
 4. SURFACE ELECTROPOLISH.
 5. TEMPERATURE RANGE: -55 ~ 200° C
 6. PRESSURE RATING: 95 MPa
 7. LEAK RATE: 1×10^{-9} cc/sec @ 1atm pressure Differential (Helium)
 8. INSULATION RESISTANCE: 1000M OHMS @500V DC AT AMBIENT
 9. "O" RING DIMENSION OD-Ø18 & ID-Ø14.

BODY & PIN DRG NO :TC 1579

NOTE: ALL DIMENSION ARE IN mm.

COMPONENTS SHALL BE FREE OF BURRS ON ALL EDGES & CORNERS.

AS PER IS:2102-1993			HOLES		TITLE.	7 PIN CONNECTOR GTMS ASSEMBLY						
LINEAR	ANGULAR	IS : GRADE	CLEAR H12	THREADED CLASS 6H UNPLATED/ UNCOATED.	MATERIAL.	BODY (SS 304) & CONTACT PIN (ALLOY 52)						
X	□ C	EXTRA COURSE			FINISH.	REF TECHNICAL DETAIL						
X.0	□ C 0	COURSE			REF	LHs3.652.8512						
X.00	□ C 00	MEDIUM										
X.000		FINE										
FINISH IN MICRONS					NAME	DATE	SCALE NTS	COSCODE	DRAWING NO.			
	> 25	DRN			S.B			TA1581				
	8 -25	CHD			K.G.P							
	1.6 -8	APPD						REV NO	01			
	0.025 -1.6											

REV NO	CHANGES MADE	DATE	APPROVED
2			
1	SURFACE FINISH NI PLATING FOR BOTH BODY & PINS.	27-11-2023	
0	ORIGINAL	30-01-2023	