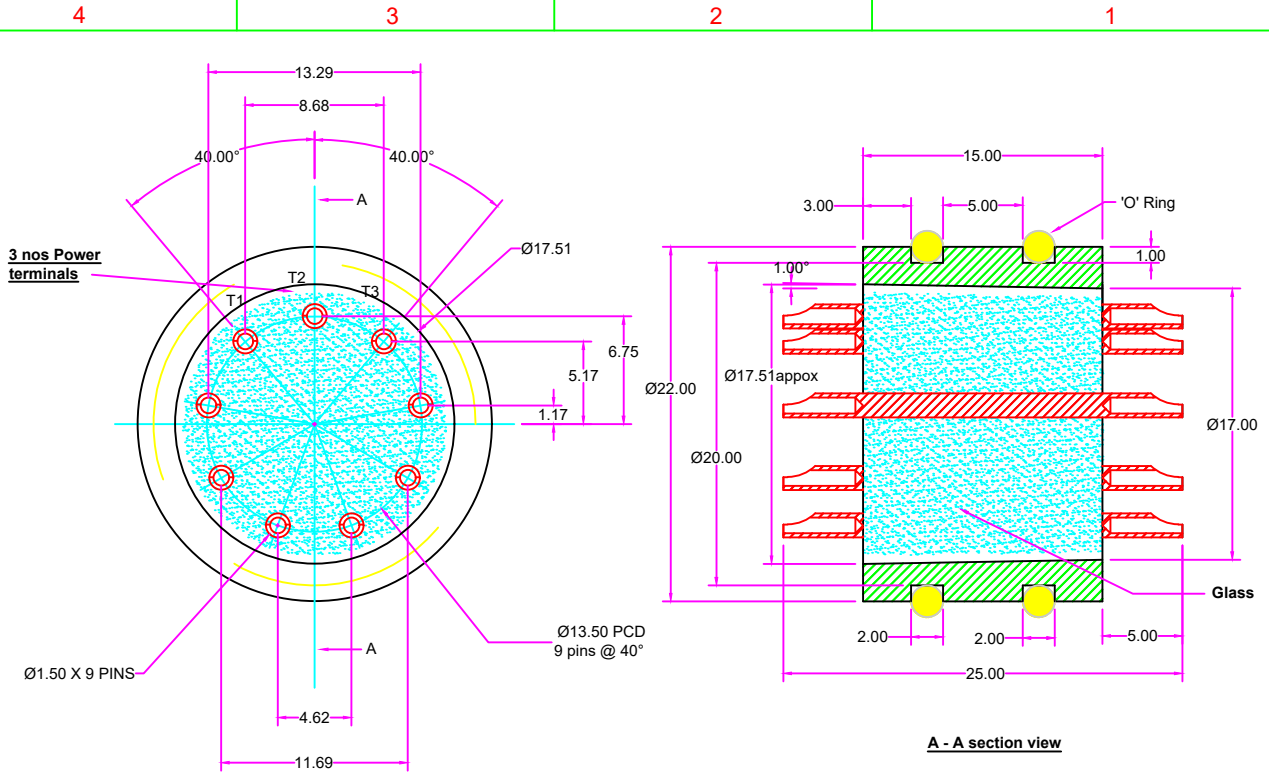


IF IN DOUBT ASK CLARIFICATION,
DO NOT SCALE.



TECHNICAL DETAILS:

1. SHELL MATERIAL : SS304L.
2. CONTACT PIN MATERIAL & FINISH : ALLOY 52 & GOLD PLATING.
3. SEALING : GLASS TO METAL HERMETIC.
4. SURFACE ELECTROPOLISH.
5. TEMPERATURE RANGE: -55 ~ 200° C
6. PRESSURE RATING: 95 MPa.
7. LEAK RATE: 1*10⁻⁹ cc/sec @ 1atm pressure Differential (Helium).
8. INSULATION RESISTANCE: 1000M OHMS @500V DC AT AMBIENT.
9. "O" RING DIMENSION OD-Ø24 & ID-Ø20.
10. 3 POWER PINS T1, T2 & T3.
11. 6 NOS PINS FOR CURRENT SIGNAL.

BODY & PIN DRG NO :TC 1579E

NOTE: ALL DIMENSION ARE IN mm.

COMPONENTS SHALL BE FREE OF BURRS ON ALL EDGES & CORNERS.

AS PER IS:2102-1993			HOLES		TITLE.	9 PIN CONNECTOR GTMS ASSEMBLY						
LINEAR	ANGULAR	IS : GRADE	CLEAR H12 THREADED CLASS 6H UNPLATED/ UNCOATED.		MATERIAL.	BODY (SS 304) & CONTACT PIN (ALLOY 52)						
X	□ C	EXTRA COURSE			FINISH.	REF TECHNICAL DETAIL						
X.0	□ C 0	COURSE			REF	-----						
X.00	□ C 00	MEDIUM										
X.000		FINE										
FINISH IN MICRONS					NAME	DATE	SCALE NTS	COSCODE	DRAWING NO.			
	> 25				DRN	S.B				TA1581E		
	8 - 25				CHD	K.G.P						
	1.6 - 8				APPD							
	0.025 - 1.6											

REV NO 01

3									
2									
1									
0									
REV NO	CHANGES MADE	DATE	APPROVED						